

MT
RT
LINE

SAFETY
AND
STABILITY
ON THE MOVE

Fittings solutions for Air-brake systems on Industrial and Commercial Vehicles.

Cmatic launches its new push-in fittings line called "MT". The MT Line has been developed and designed to ensure high reliability and safety in the pneumatic braking systems on commercial and industrial vehicles.

The RT Line completes the product offer. Also known as the "Accessory" line or "Standard Fittings" line, the RT Line consists of a wide variety of components such as: nipples, L-T fittings, hose, reductions and more. All RT Line components are brass nickel-plated.

All MT push-in fittings are provided with an internal rubber insert that keeps dust and humidity away from the inner parts of the fittings, safeguarding quality and performances in time.

Accidental detachments cannot occur since the tube can be disconnected only by means of the tool developed for this purpose.



WORKING PRESSURE
0 – 16 bar



WORKING TEMPERATURE
-50 °C ÷ +100 °C

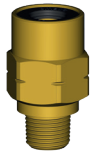


Cmatic's MT and RT fittings are TUV certified according to DIN 74324:1996 - DIN EN ISO 9227:2017-07 and DIN EN 60068-2-6:2008

 **MADE IN ITALY**

cmatic[®]
PNEUMATIC FITTINGS

MT 11



MT11 06 1/8NPTF
MT11 08 1/8NPTF

MT 12



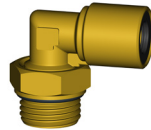
MT12 06 M10X1
MT12 06 M12X1,5
MT12 06 M14X1,5
MT12 06 M16X1,5
MT12 08 M10X1
MT12 08 M12X1,5
MT12 08 M14X1,5
MT12 08 M16X1,5
MT12 08 M22X1,5
MT12 10 M12X1,5
MT12 10 M14X1,5
MT12 10 M16X1,5
MT12 10 M22X1,5
MT12 12 M12X1,5
MT12 12 M14X1,5
MT12 12 M16X1,5
MT12 12 M22X1,5
MT12 15 M16X1,5
MT12 15 M22X1,5
MT12 16 M16X1,5
MT12 16 M22X1,5
MT12 18 M22X1,5

MT 13



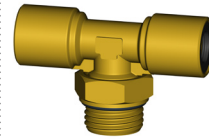
MT13 06 M10X1
MT13 06 M16X1,5
MT13 08 M10X1

MT 16



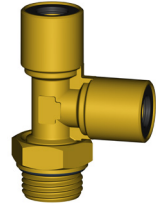
MT16 06 M10X1
MT16 06 M12X1,5
MT16 06 M14X1,5
MT16 06 M16X1,5
MT16 08 M10X1
MT16 08 M12X1,5
MT16 08 M14X1,5
MT16 08 M16X1,5
MT16 08 M22X1,5
MT16 10 M12X1,5
MT16 10 M14X1,5
MT16 10 M16X1,5
MT16 10 M22X1,5
MT16 12 M12X1,5
MT16 12 M14X1,5
MT16 12 M16X1,5
MT16 12 M22X1,5
MT16 15 M16X1,5
MT16 15 M22X1,5
MT16 16 M16X1,5
MT16 16 M22X1,5
MT16 18 M22X1,5

MT 21



MT21 06 M10X1
MT21 06 M12X1,5
MT21 06 M14X1,5
MT21 06 M16X1,5
MT21 08 M10X1
MT21 08 M12X1,5
MT21 08 M14X1,5
MT21 08 M16X1,5
MT21 08 M22X1,5
MT21 10 M12X1,5
MT21 10 M14X1,5
MT21 10 M16X1,5
MT21 10 M22X1,5
MT21 12 M12X1,5
MT21 12 M14X1,5
MT21 12 M16X1,5
MT21 12 M22X1,5
MT21 15 M16X1,5
MT21 15 M22X1,5
MT21 16 M16X1,5
MT21 16 M22X1,5
MT21 18 M22X1,5

MT 24



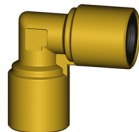
MT24 06 M10X1
MT24 06 M12X1,5
MT24 06 M14X1,5
MT24 06 M16X1,5
MT24 08 M10X1
MT24 08 M12X1,5
MT24 08 M14X1,5
MT24 08 M16X1,5
MT24 08 M22X1,5
MT24 10 M12X1,5
MT24 10 M14X1,5
MT24 10 M16X1,5
MT24 10 M22X1,5
MT24 12 M12X1,5
MT24 12 M14X1,5
MT24 12 M16X1,5
MT24 12 M22X1,5
MT24 15 M16X1,5
MT24 15 M22X1,5
MT24 16 M16X1,5
MT24 16 M22X1,5
MT24 18 M22X1,5

MT 26



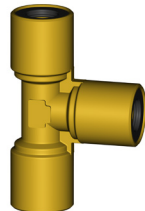
MT26 06 06
MT26 08 08
MT26 10 10
MT26 12 12
MT26 15 15
MT26 16 16
MT26 18 18

MT 28



MT28 06 06
MT28 08 08
MT28 10 10
MT28 12 12
MT28 15 15
MT28 16 16
MT28 18 18

MT 29



MT29 06 06
MT29 08 08
MT29 10 10
MT29 12 12
MT29 15 15
MT29 16 16
MT29 18 18

TUBE RELEASE TOOL



SIZE 1 FROM 6 mm
TO 12 mm
SIZE 2 FROM 15 mm
TO 18 mm

TCUT HOSE CUTTER



ØE TUBO
SIZE 2-20 mm

PA 12 B*



PA12 B 6-4
PA12 B 8-6
PA12 B 10-8
PA12 B 12-9
PA12 B 15-12
PA12 B 16-12
PA12 B 18-14

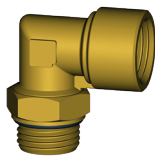
*in compliance with
the requirements of
DIN 74324

RT 15



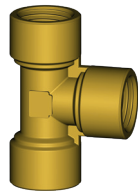
RT15 M12X1,5 M16X1,5
RT15 M12X1,5 M22X1,5
RT15 M16X1,5 M22X1,5

RT 22



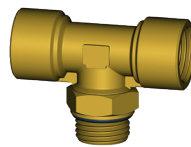
RT22 M16X1,5 M16X1,5
RT22 M22X1,5 M16X1,5
RT22 M22X1,5 M22X1,5

RT 23



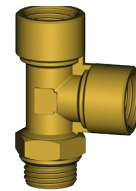
RT23 M16X1,5 M16X1,5
RT23 M22X1,5 M22X1,5

RT 24



RT24 M12X1,5 M16X1,5
RT24 M16X1,5 M16X1,5
RT24 M22X1,5 M16X1,5
RT24 M22X1,5 M22X1,5

RT 25



RT25 M12X1,5 M16X1,5
RT25 M16X1,5 M16X1,5
RT25 M22X1,5 M16X1,5
RT25 M22X1,5 M22X1,5

RT 46



RT46 00 M12X1,5
RT46 00 M16X1,5
RT46 00 M22X1,5



Bullet Engineering Pty Ltd

Email: sales@bullet-eng.com.au
www.bullet-eng.com.au

Hydraulic, Pneumatic & Mechanical Power Transmission Solutions